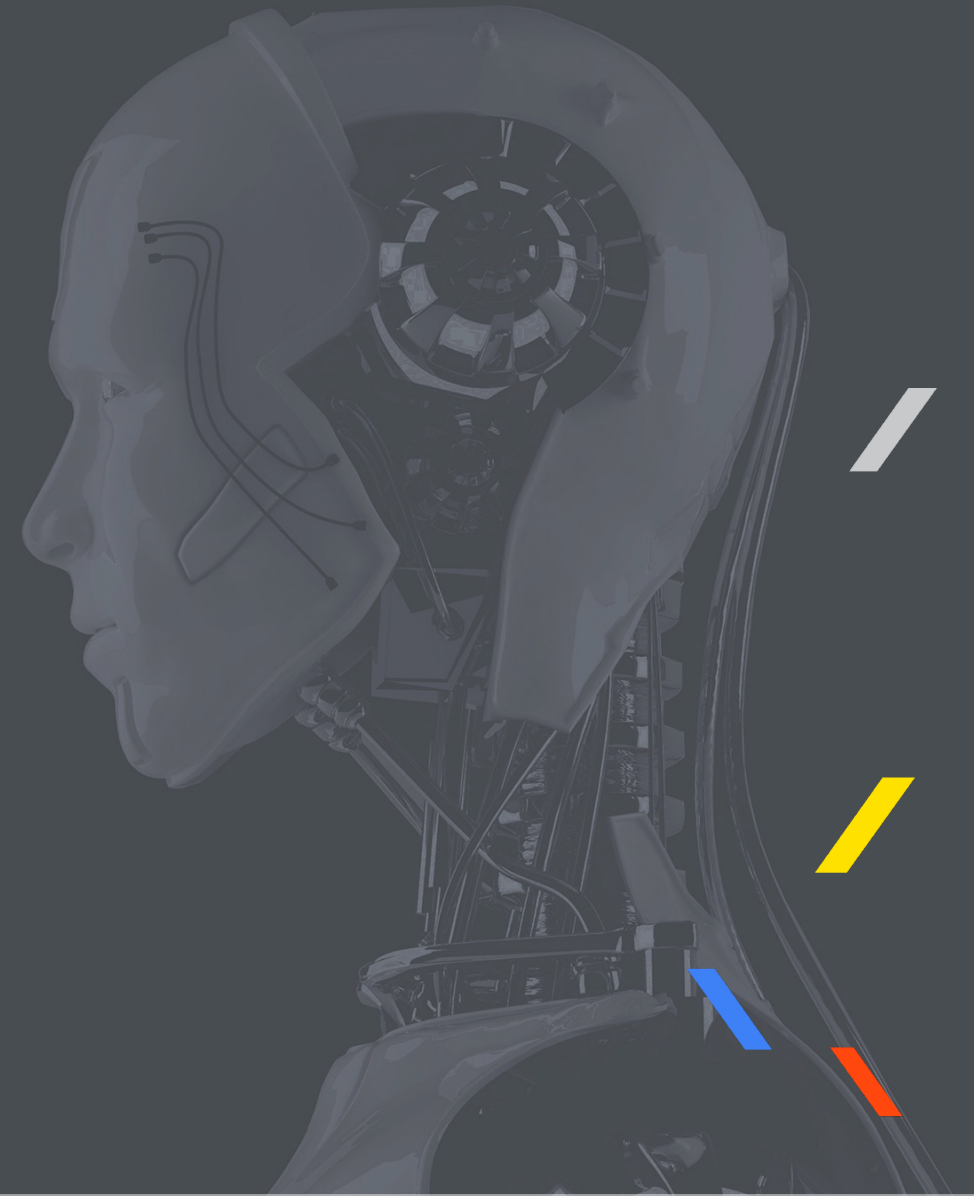


2017  
EXEM IR STORY

---





# INDEX

ABOUT EXEM

PRODUCT

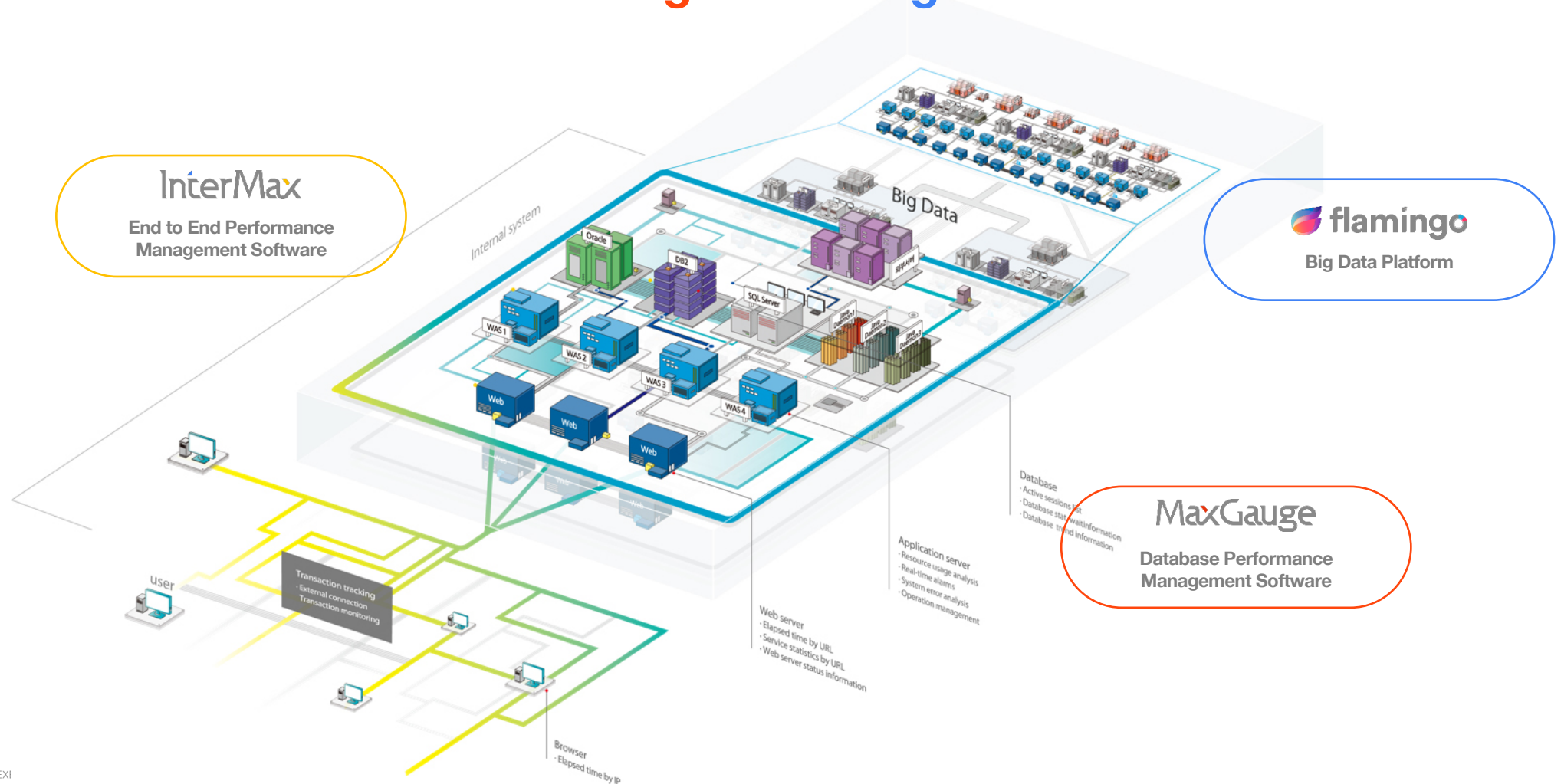
CONSULTING

EXEM ACADEMY

SALES REPORT

GLOBAL STRATEGY

# EXEM is a company specializing in IT Performance Management • Big Data Platform



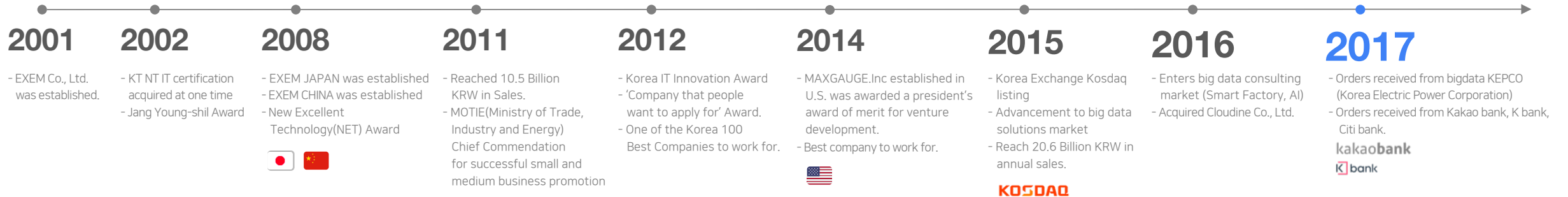
**InterMax**  
End to End Performance  
Management Software

**flamingo**  
Big Data Platform

**MaxGauge**  
Database Performance  
Management Software



- **Established Date : 01/2001**
- **Stock Listing Date : 06/26/2015**
- **Company Capital : 2.9 Billion KRW**
- **Sales : 27.5 Billion KRW**
- **Number of Employees : 197**
- **Subsidiary : Sinsiway (Security Solutions)**
- **Investors : Sunjesoft Co. (In-memory DB), Imcloud (Big Data Solutions)**
- **Overseas Branch : China, Japan, U.S.**



# MaxGauge Database Performance Management Software

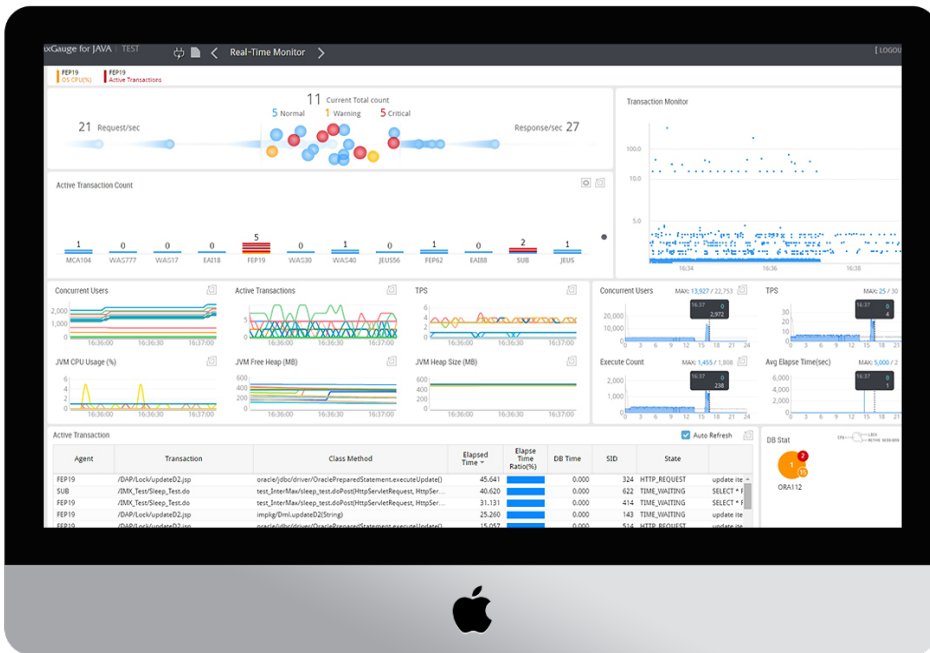
No. 1  
in Korea



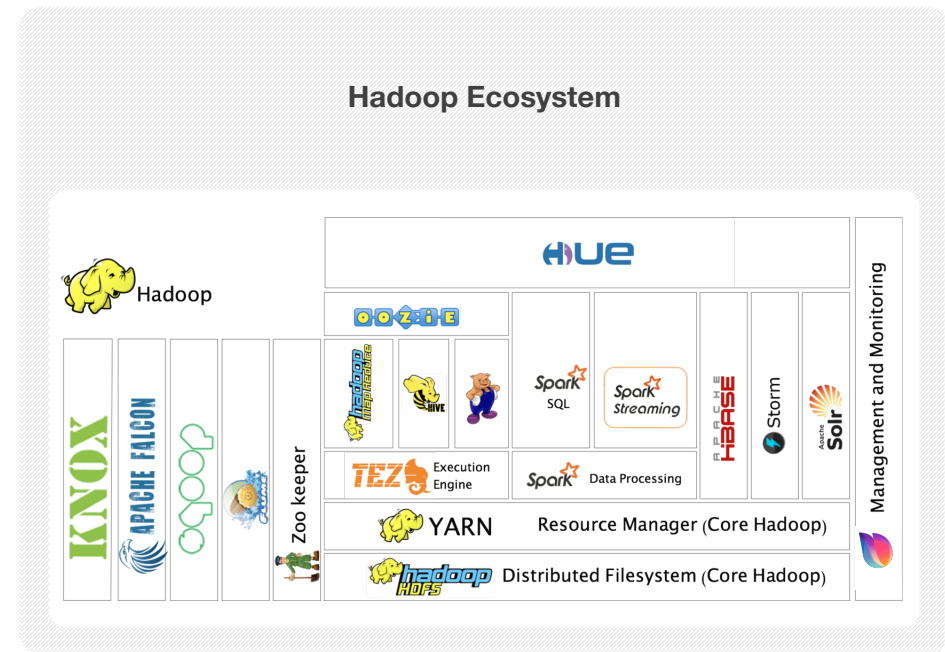
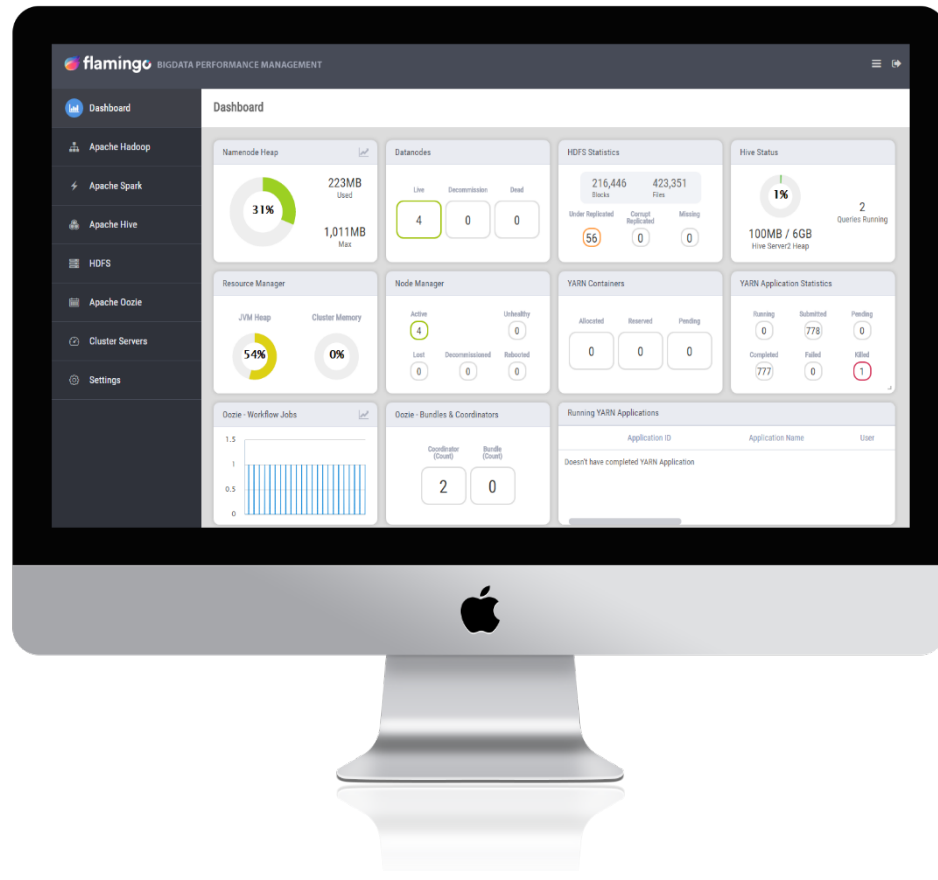
- MaxGauge for Oracle
- MaxGauge for DB2
- MaxGauge for SQL Server
- MaxGauge for Tibero
- MaxGauge for MySQL
- MaxGauge for Altibase
- MaxGauge for Maria DB



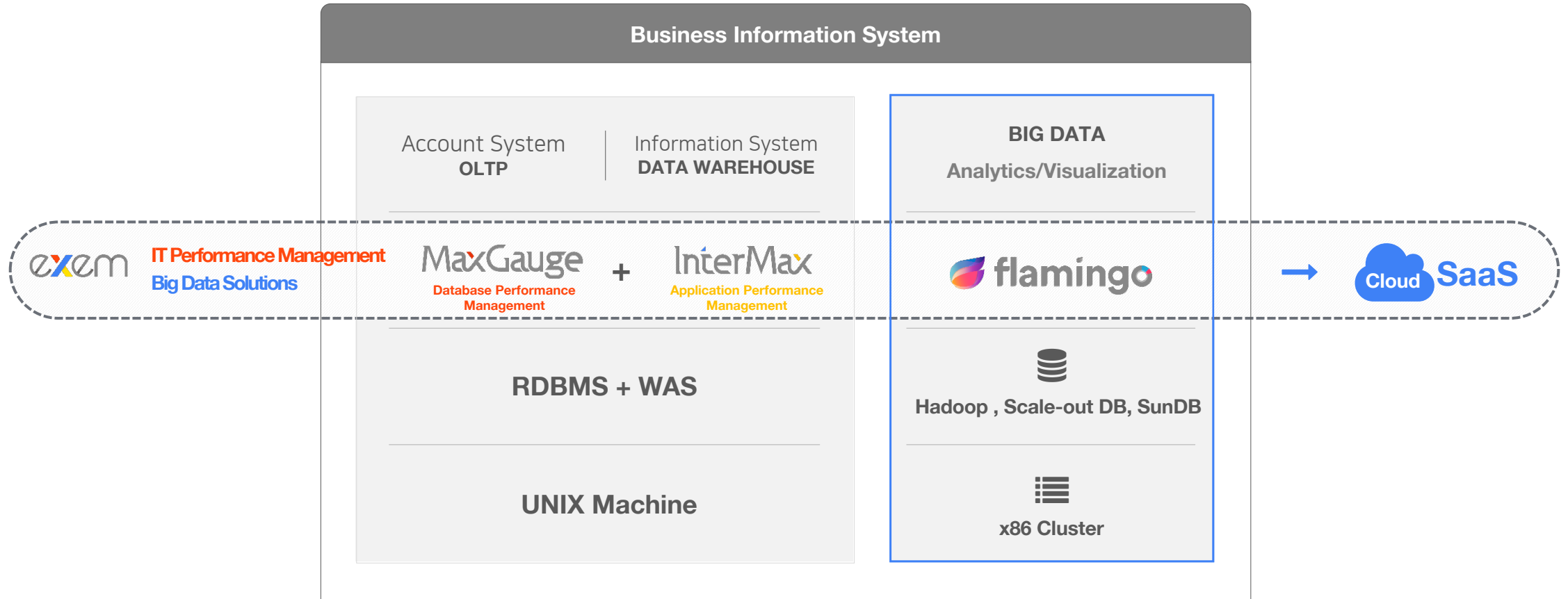
# Intermax Web Application / End to End Performance Management Software



# Flamingo Big Data Operation / Analysis / Management Integration Platform

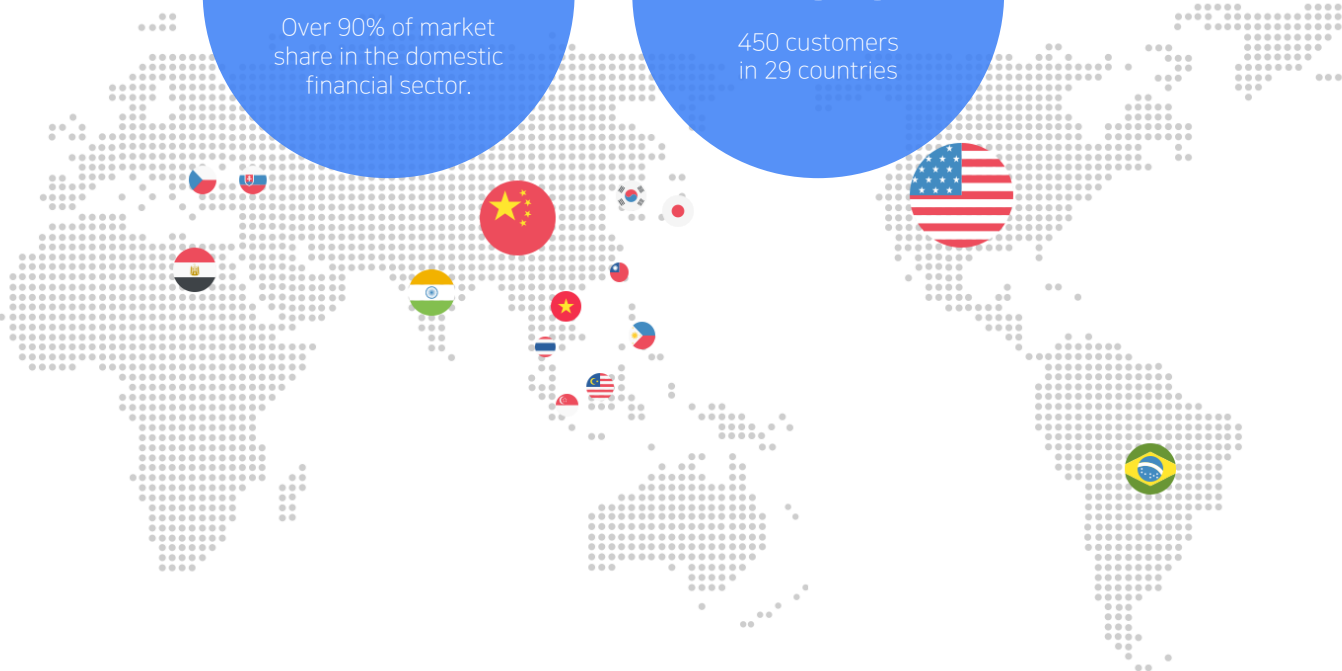
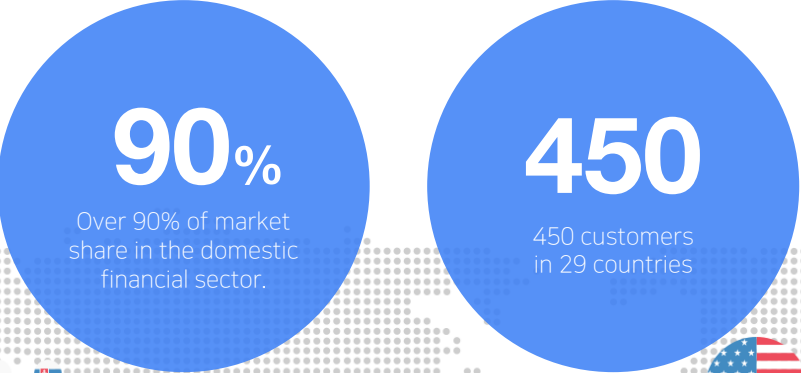


# Business Information System, All Coverage





# Korea's Standard, Global Software



China

USA

# Database·Application Performance Diagnostics **Consulting Service**

The top consultants with years of consulting experience in the Database · Application industry have come together as a team.

We use the performance management solutions to provide a guide to real-time performance monitoring and tuning on database and applications,  
and execute performance diagnostics on the collected system history.



Root cause analysis of  
long-standing issues



Identify bottlenecks and  
provide improvement solutions  
for a stable service



Reduce service elapsed  
time through tuning.

**Database · Application Performance Improvement ↑**

# EXEM Big Data Consulting

Ministry of Science, ICT and Future Planning  
Intelligence Information Technology



AI



Mobile



IoT



Cloud



Big Data

## Smart Factory

Wins government's order  
for Smart Factory Government

2016.06



## Big Data Platform

Wins an order for the  
biggest domestic site, the  
Korea Electric Power Corporation

2017.02



## Artificial Intelligence

Pohang University of  
Science and Technology  
R&D Center Established

2016.06



## Cloud

LG Electronics MariaDB  
Performance Tuning

2017.02



LG Electronics

## Transportation

Korea Expressway Corporation  
C-ITS Big Data Center established.

2016.11

## Intelligent Robot

Ministry of Industry's  
Artificial Intelligence (Exobrain)

2017.01

## Government

Wins the National Information  
Society Agency's order

2016.06



With competence and knowledge accumulated by years of research and study as our foundation, we provide practical trainings, and also keep in close communication with the IT specialists.



Exem-published books are highly reliable and trusted IT books.



Provide knowledge contents through premium training service, and various on or offline seminars



Enjoy a fun learning almost anywhere! Exem is creating a new knowledge playground!



Watch the IT Knowledge Channel , 'EXEM TV' and experience IT learning in a more convenient, easier, and faster manner.



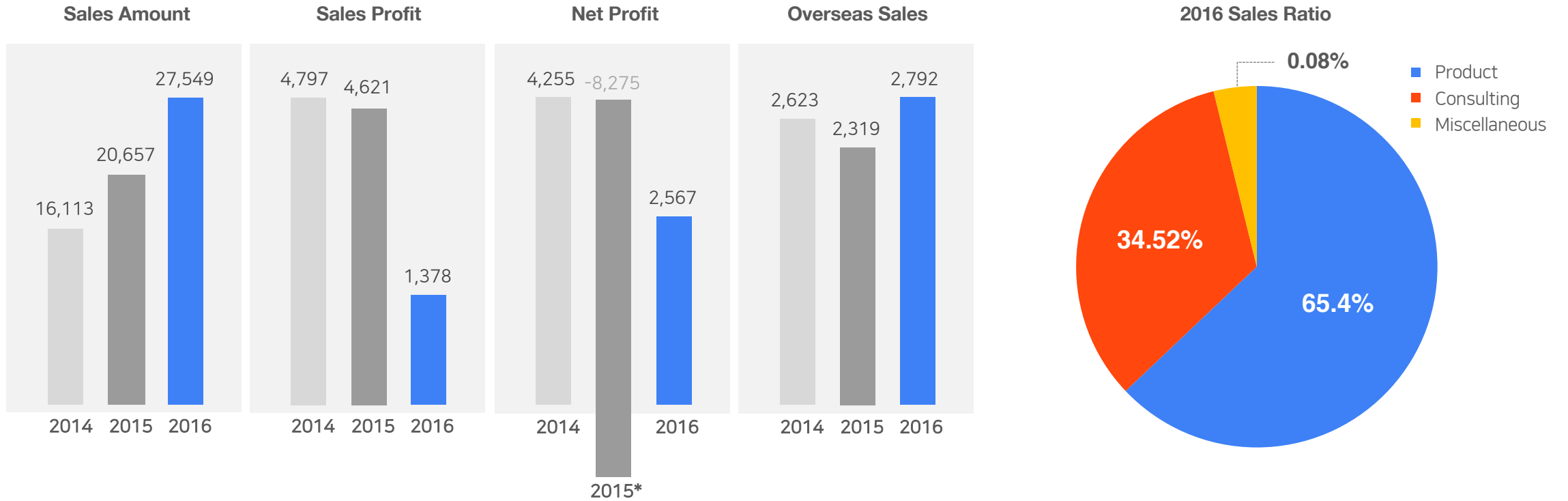
We share technology to help build a more convenient IT world.



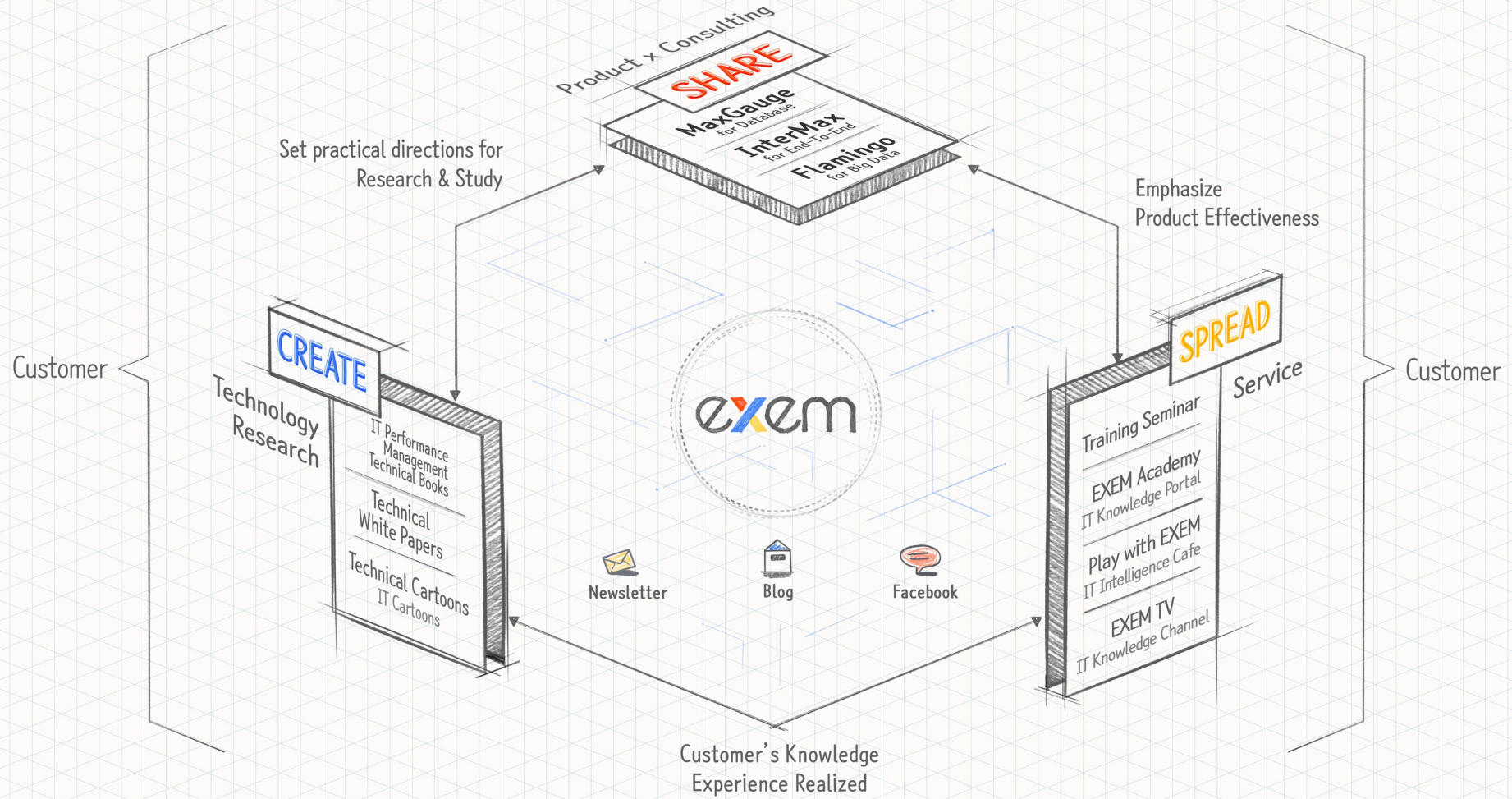
Difficult and complicated IT information is presented in simple cartoon format.



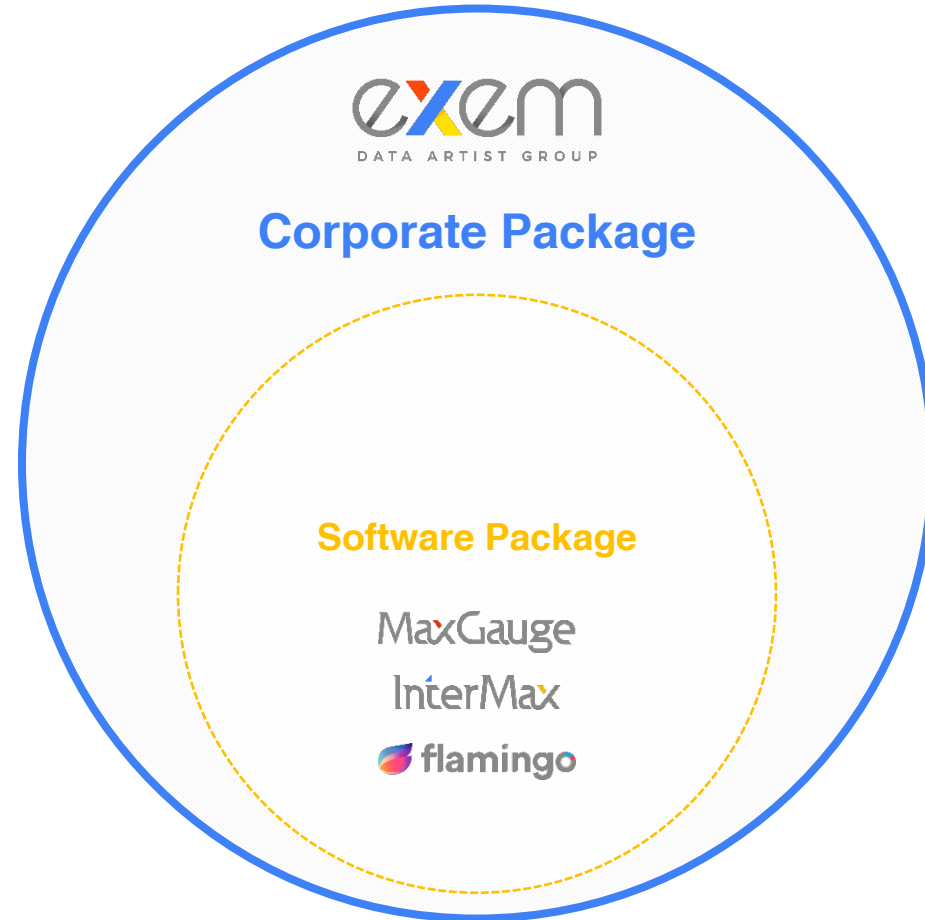
# 2016 EXEM Sales Report



\*In 2015, there was a merger with Kyobo wid spec and the merger cost of 12.5 billion KRW was reflected in the non-operating expense and hence, resulted in a net lost during the term, however, this was a one-time expense without a cash outflow which is recognized only for the purpose of accounting. Since our stock listing in 2015, we have recruited more qualified specialists in accordance with the big data business expansion, and profits and losses were generated accordingly. [For detailed financial reports, please reference the Appendix on the reverse side.](#)



# EXEM's Global Competitiveness **Corporate Package**





# Appendix

## Consolidated Statement of Financial Position

(Unit : Million KRW)

Subjects	2016	2015	2014
Current Assets	33,523	19,278	15,593
Non-current Assets	21,576	18,021	7,003
Total Assets	55,099	37,299	22,596
Current Liabilities	10,358	5,614	4,601
Non-current Liabilities	11,991	1,963	1,993
Total Liabilities	22,349	7,577	6,594
Capital	2,993	2,858	1,600
Capital Surplus	20,429	15,042	-
Other Capital Surplus	-2,941	2,221	-1,442
Accumulated Other Comprehensive Income	10	26	15
Earned Surplus	7,727	5,358	15,709
Non-controlling Interests	4,532	4,217	122
Total Capital	32,750	29,722	16,004

## Consolidated Statement of Profits and Losses

(Unit : Million KRW)

Subjects	2016	2015	2014
Sales Amount	27,549	20,657	16,113
Cost of Sales	13,574	7,797	5,841
Gross Sales Profit	13,975	12,860	10,272
Operating Profit	1,378	4,621	4,797
Net Profit During the Term	2,567	-8,275	4,255
Net income attributable to the owner	2,370	-8,909	4,205
Net income attributable to the non-controlling interests	197	634	50
Total Comprehensive Profits and Losses	2,545	-8,259	4,265
Basic Net Income per Share (Unit: KRW)	83	-348	163
Number of Companies included in the Consolidation Statement	4	3	2





**Thank you**

